

HOCHDORF is an expert in **specialty formula** for infants, young children and adults with individual requirements. **Food for special medical purposes** means food specially processed or formulated and intended for the dietary management of patients. It should be used under medical supervision.



**Food for special
medical purposes**

KEY NUTRIENTS OF FSMP IN BRIEF

WHEY PROTEIN¹

Protein in mature human milk consists of 60% whey and 40% casein. Whey protein contains all 9 essential amino acids and its structure makes it easier to digest than casein. Whey protein also promotes a healthy gut microbiota and supports the immune system.

OMEGA-3 AND OMEGA-6 FATTY ACIDS³

α -linolenic acid (ALA), an omega-3 fatty acid, and linoleic acid (LA), an omega-6 fatty acid, are considered essential fatty acids because they cannot be synthesized by the body yet are necessary for health. The long-chain omega-3 fatty acid docosahexaenoic acid (DHA) can be synthesized in the body from ALA and the omega-6 fatty acid arachidonic acid (ARA) from LA. DHA and ARA are important for the development of the brain and the eyes.

MILK FAT (AMF)⁵

Milk fat is produced from cream and naturally contains β -palmitate, high quantities of which can be found in human milk. Due to its structure it is easily digested and absorbed. Furthermore, it supports the absorption of calcium and positively influences the gut microbiota.

NUCLEOTIDES²

Nucleotides are the building blocks of the DNA. The body can produce these building blocks by itself. However, during phases of rapid growth and development, the body's own production is insufficient and external sources are required. Nucleotides support the immune system.

CARBOHYDRATES⁴

Carbohydrates are the quickest source of energy. In human milk, lactose is the only carbohydrate source; it delivers 33-42% of the energy to infants. Lactose is composed of glucose and galactose. An enzyme called lactase is required to digest lactose. Without this enzyme, the lactose will not be digested. Instead the lactose can reach the colon where it is metabolised by the gut bacteria. This might lead to gas production and therefore bloating and cramps.

PREBIOTICS (HMO, GOS, FOS)⁶

Prebiotics are indigestible, fermentable fibres. The human body cannot break them down and therefore prebiotics act as nutrients for the gut microbiota. Prebiotics like human milk oligosaccharides (HMO) which includes 2'-fucosyllactose (2'-FL), galactooligosaccharides (GOS), or fructooligosaccharides (FOS) stimulate the growth and activity of beneficial bacteria in the gut.

References

Ref. 1: Vivatvakin B. Asia Pac J Clin Nutr, 2010 19(4):473-480. / Walzem R.L., et al. Critical Reviews in Food Science and Nutrition, 2002 42(4):353-375. **Ref. 2:** Schaller J.P., et al. Semi Fetal Neonatal Med 2007 12(1):35-44. **Ref. 3:** Yaorn S., et al. JPGN, 2013 56(4):376-81. / Yao M., et al., JPGN, 2014 59(4):440-448. / Hagemann J.H.J., et al. Int Dairy J, 2019 92:37-49. **Ref. 4:** Stam J., et al. AM J Clin Nutr, 2013 98:521-528. / Maas Y.G. et al., Br J Nutr 1998 80:35-40. / Vandenplas Y., et al. 2015 Asia Pac J Clin Nutr 24(1):9-13. **Ref. 5:** Forsyth S., et al. Proc Nutr Soc, 2017 76(4):568-573. **Ref. 6:** Hegar B., et al. Pediatric Gastroenterol Hepatol Nutr, 2019 22(4):330-340. / Vandenplas Y., et al. British Journal of Nutrition, 2014 113:1339-1344. / Paineau D., et al. J Nutr Sci Vitaminol, 2014 60:167-175.

BC Specialty Pre 1.0

Infant formula for preterm infants with an adapted nutrient composition.

Indication:

For preterm infants with birth weight between 1000 – 1800g.

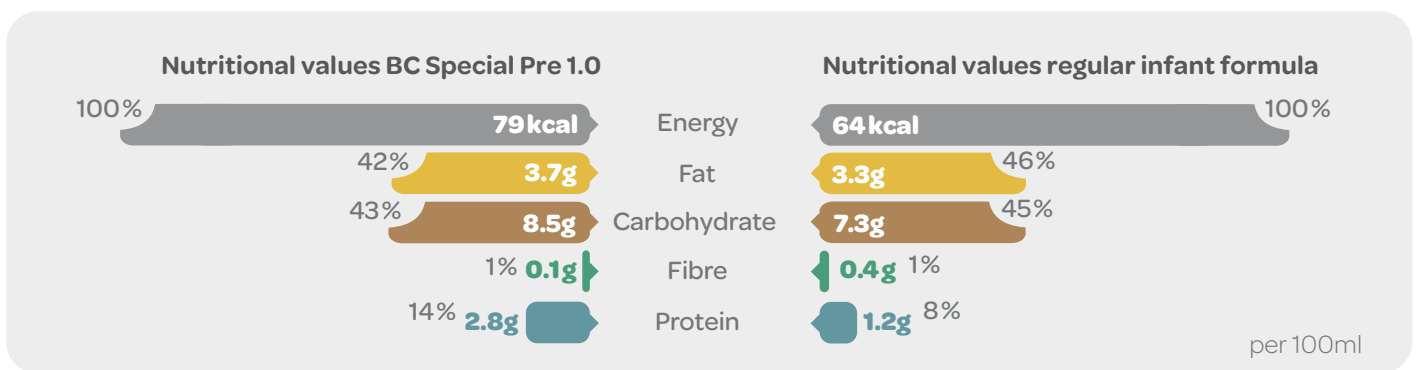
Content:

All the ingredients that premature infants need for normal growth according to ESPGHAN Guidelines (ESPGHAN (2010): Enteral Nutrient Supply for Preterm Infants).

Benefits:

- | Extra energy
- | Extra protein
- | Adapted whey:casein ratio (70:30)
- | Lactose as the main carbohydrate source (88% carbs)
- | Prebiotic GOS
- | AMF, natural source of β -palmitate
- | Containing 5 types of nucleotides
- | Containing MCT (medium-chain triglycerides) for an easy and quick source of energy and to support thermoregulation & calcium absorption

**For
infants**



BC Specialty LF 1.0

BC Specialty LF 1.0 is a complete dietary lactose-free infant formula for infants from birth onwards.

Indication:

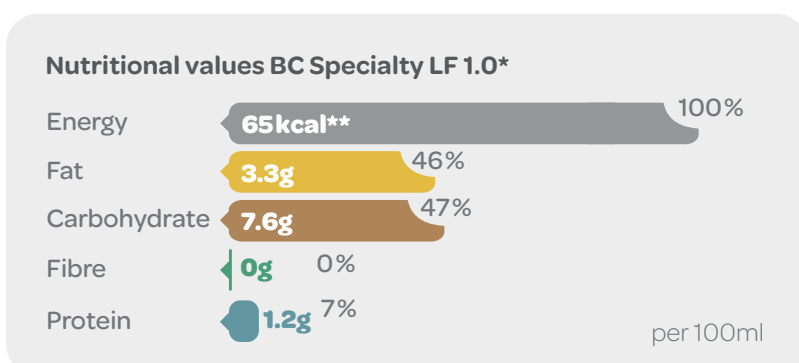
For babies who have difficulties digesting lactose. Suitable for transient lactase deficiency associated with diarrhoea.

Content:

All the ingredients infants need, including key nutrients, but without lactose.

Benefits:

- | Based on lactose-free skimmed milk powder
- | Lactose completely replaced by easily digestible maltodextrin
- | Adapted whey:casein ratio (60:40)
- | Essential fatty acids ALA & LA
- | Additional omega-3 & omega-6 fatty acids DHA & ARA
- | Contains 5 types of nucleotides
- | Suitable for use during episodes of diarrhoea when lactose is difficult to metabolise.



BC Specialty Rice

BC Specialty Rice is a complete dietary infant formula for infants with cow's milk allergy from birth onwards.

Indication:

For babies who are allergic to milk protein or suffering from galactosemia

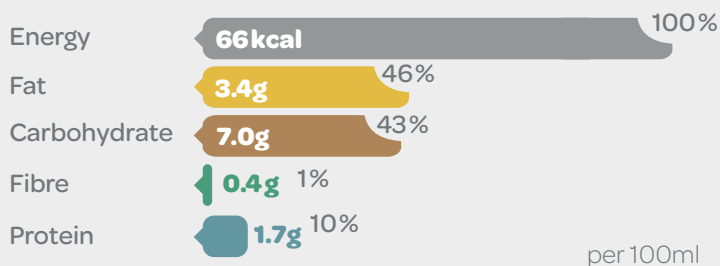
Content:

All the ingredients infants need, including key nutrients on a plant basis and based on hydrolyzed rice protein.

Benefits:

- | Free from allergens, lactose and galactose
- | Based on hydrolyzed rice protein
- | Lactose completely replaced by easily digestible maltodextrin
- | Prebiotic FOS
- | DHA from algae
- | Longchain polyunsaturated fatty acids: DHA, ARA, LA, ALA
- | Contains 5 types of nucleotides
- | Fully plant based composition

Nutritional values BC Specialty Rice



BC Specialty AR 1.0

Specialty AR is an infant and follow-on formula developed for the dietary management of infants with regurgitation (reflux). Available for stage 1 and stage 2.

Indication:

For use in treating reflux and alleviating problems with vomiting and spitting up milk.

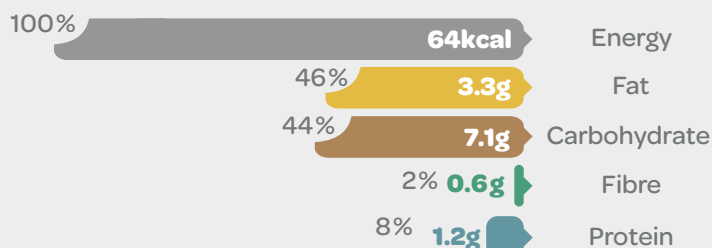
Content:

Thanks to the addition of a natural thickening agent derived from carob fruit, this formula has a dense consistency that helps your baby retain food in their stomach thereby reducing regurgitation and vomiting.

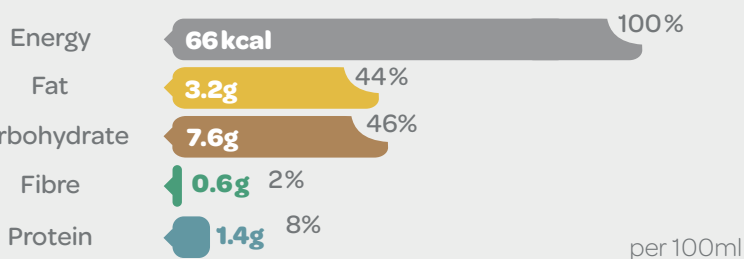
Benefits:

- | Adapted whey:casein ratio (1-60:40 / 2-50:50)
- | Lactose as only carbohydrate source
- | Prebiotic GOS
- | Carob bean gum is a natural fibre with prebiotic effects
- | AMF, natural source of β -palmitate
- | Essential fatty acids ALA & LA
- | Additional omega-3 & omega-6 fatty acids DHA & ARA
- | Contains 5 types of nucleotides

Nutritional values BC Specialty AR1



Nutritional values BC Specialty AR2



BC Specialty PediaMed 1.0

PediaMed 1.0 is suitable for enhancing the energy, protein and micronutrient intake of young children between the ages of 1 and 10. BC Specialty PediaMed can be used as supplemental nutrition or as a sole source of nutrition.

Indication:

For the dietary management of young children with or at risk of disease-related malnutrition. Suitable for children unable to suck or swallow, with congenital anomalies or other conditions where oral nutritional supplements or enteral tube feeding might be beneficial.

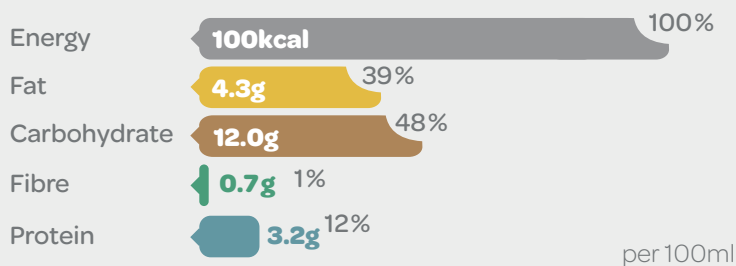
Content:

Maltodextrin, galactooligosaccharides (GOS), vitamins and minerals, essential fatty acids.

Benefits:

- | As a milk drink or also added to dairy products and smoothies
- | Isocaloric: 1ml = 1kcal
- | With vanilla flavour for a pleasant, sweet taste
- | Low in lactose (lactose from GOS & whey protein, no added lactose)
- | Prebiotic GOS
- | Essential fatty acids LA & ALA
- | Additional omega-3 fatty acid DHA
- | Contains essential vitamins and minerals

Nutritional values PediaMed 1.0



**For
children
1-10 years**

Medical Nutrition 1.0

Medical Nutrition 1.0 is a nutritionally complete, powder based, nutritional supplement (1.0 kcal/ml) with fibre. Medical Nutrition can be used as supplemental nutrition or as a sole source of nutrition.

Indication:

For dietary management of patients with malnutrition or patients at risk of malnutrition. Medical Nutrition might be used after surgery, for cancer patients, or any other disease where oral nutritional supplements or enteral tube feeding might be beneficial.

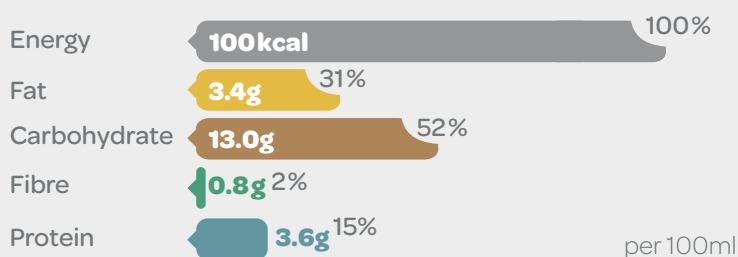
Content:

Fructooligosaccharides (FOS), vitamins and minerals, essential fatty acids.

Benefits:

- | As a milk drink or as a basis for other applications where milk is used, porridge, Bircher muesli, pancakes
- | Isocaloric: 1ml = 1kcal
- | With vanilla flavour for a pleasant taste
- | Based on casein (milk protein) & soy protein
- | Lactose-free
- | Prebiotic FOS
- | Essential fatty acids: ALA & LA
- | Contains essential vitamins and minerals

Nutritional values Medical Nutrition 1.0



**For
children
(from 10 years)
& adults**



Visit our
website:



**WANT TO KNOW MORE?
CONTACT US!**

HOCHDORF Swiss Nutrition Ltd
Siedereistrasse 9, 6281 Hochdorf
Switzerland
Phone: +41 41 914 65 65
baby care@hochdorf.com
hochdorf.com